

HOSTED BY  
SLITERS ACE LUMBER & BUILDING SUPPLY  
AND  
THE FLATHEAD BUILDING ASSOCIATION

THREE DAYS OF SELF-GUIDED  
TOURS THROUGH THE  
FLATHEAD'S FINEST HOMES



# *P*ARADE *of* HOMES

SEPTEMBER 9, 10 & 11  
FRIDAY: NOON - 8 PM  
SATURDAY: 10 AM - 8 PM  
SUNDAY: 10 AM - 5 PM

ON THE COVER:  
2010 PEOPLE'S CHOICE WINNER  
DOUG NASH CONSTRUCTION



# 2011 CONCEPT HOME

## Bear Mountain Builders

### HOME FEATURES

Come see the latest interior design trends and innovative building products showcased in the 2011 Bear Mountain Builders Concept Home.

This year our team put together a creative blend of Montana craftsman architecture with a twist of modern interior style that is warm and inviting, but best of all ... sustainable!

#### ◆ KITCHEN

Eco-friendly bamboo cabinets are the highlight with their dark raisin finish and brushed stainless accents. Graphite concrete countertops, stainless steel appliances and a backdrop of crimson glass tiles finish the look.

#### ◆ LIVING

Contemporary, yet comfortable furniture rests on a floor of burnished dark cork. The orientation gives prominence to the clean, modern design of the fireplace. The LED illumination of scarlet crystal glass makes a profound statement.

#### ◆ DINING

The rich caramelized color of a solid bamboo table shines brightly under a simple, yet thought provoking chandelier.

#### ◆ MUDROOM

This is the one room in a house that every family with kids wishes they had more space. Our custom individual lockers complete with benches, a bank of cabinets with a large utility sink and a separate laundry room will give many creative ideas for your next home.

#### ◆ MASTER SUITE

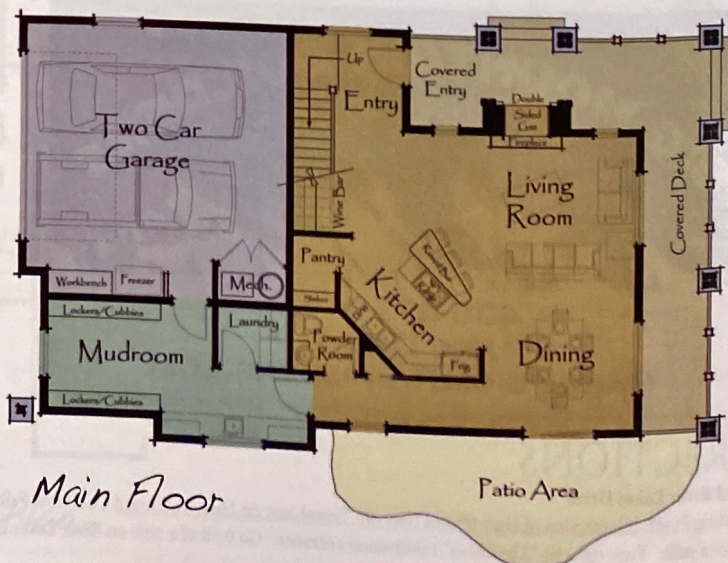
Every parent needs a place of refuge. The stimulating textures and invigorating colors create a spa-like tranquility that will be sure to inspire.

#### ◆ BUNK ROOM – NURSERY – ROMPER ROOM

When you visit these rooms, you will see what happens when an accomplished building team is given free reign to be creative.

#### ◆ WHAT REALLY COUNTS

Our six-year-old son asked if this home was being constructed with the environment in mind. Our answer to him was a big YES! We utilized factory framed wall panels and floor/roof trusses from Western Building Center. Sustainable bamboo cabinets, cork flooring and concrete countertops are about as green as it gets. We also used low VOC Valspar paints and adhered to the new Montana Energy Code by installing the latest in window glazing technology by Jeld-Wen® and products such as Eco-bat insulation. The house environment is maintained by a combination of radiant floor heat and a 96 percent efficient Trane furnace and AC system.





# Whitefish 5



*Tawnya & Kelcey Bingham*

BUILDERS'S SPOTLIGHT

## HOME FACTS

Main Floor Sq. Ft.	1,108
Upper Floor Sq. Ft.	1,577
Bedrooms	3
Bathrooms	2 ½
Garage Sq. Ft.	616



**BEAR MOUNTAIN BUILDERS**  
 623 Woodland Place  
 Whitefish, Montana 59937  
 406.862.3302  
 info@bearmountainbuilders.com  
 www.bearmountainbuilders.com

## PRICE RANGE

**Premier:** \$200,000 - \$349,999  
 \*price does not include land  
**For Sale:** Yes

## PROJECT TEAM



## SUBCONTRACTORS & SUPPLIERS

- |   |                             |
|---|-----------------------------|
| Arrow Concrete                                | Malchi Tile                 |
| Bitterroot Valley Log & Timber                | May Landscaping             |
| Big Mountain Glass                            | Montana Carpet Brokers      |
| Blackstar Drywall                             | Natures Best Doors          |
| Bosco Electric                                | Northern Plumbing & Heating |
| Central Heating, Cooling, Plumbing & Electric | Old World Cabinet Co.       |
| CM Quality Insulation                         | Overhead Door Co.           |
| CMT Fabrication                               | RBM Lumber                  |
| Countryside Welding                           | Rocky Mountain Tile         |
| DB Masonry                                    | Timber Forge Design         |
| Feldt Excavation                              | Townsend Roofing            |
| Ferguson Supply                               | Under the Sun Painting      |
| Fireplace Center of Kalispell                 | Warner Construction         |
| Heritage Concrete                             | WBC Cabinets                |
| Lowe's Valspar Paint                          | Young Guns Flooring         |

## MEET THE BUILDERS

This is the 10-year anniversary of Bear Mountain Builders crafting fine custom homes in the Flathead Valley of Montana. In the mid-90s Kelcey and Tawnya Bingham built numerous log and timberframe homes throughout remote locations in the San Juan Islands and Cascade Mountains of Washington State. This husband and wife team learned their trade the old fashioned way: they started with their tool belts on and got their hands dirty.

In 2001, Kelcey and Tawnya decided it was time to leave Washington behind and find a community with good hometown values where they could start a family. The Bingham's chose Whitefish, Montana as their new home and thus began the legacy of Bear Mountain Builders. They now have three children: Cody, Logan and Atley.

In 2006, Tom Fontenoy joined the team as a project superintendent. Tom has more than 30 years of construction management experience and has built hundreds of homes in some of the finest neighborhoods in Scottsdale, Arizona. The team at Bear Mountain Builders works extremely well together and takes pride in their old-world craftsmanship techniques while keeping an emphasis on attention to the small details —but it is their ability to follow a budget that clients seem to appreciate most!

Although they have retired their tool belts, you will rarely find Kelcey or Tawnya at the office. They continue the tradition of being hands on at the jobsites. Past clients, architects and local bankers will tell you how easy Bear Mountain Builder's process is and how well they communicate with everyone involved.

## DIRECTIONS

**5004 Tumblehome Avenue**

Starting Point: Intersection of Hwy 93 and Hwy 40. Travel east on Hwy 40, toward Columbia Falls for approx .8 miles. Turn left on River Lakes Parkway. Stay on River Lakes Parkway for approx .4 miles. Turn right on Voyager Drive. Go four blocks, home is on the corner of Voyager Drive and Tumblehome Ave.